

Mother and Puppies - Family Group 1

The DNA Marker used to look at DNA patterns in the dogs has 10 possible bands. Remember that each dog can only have two of these bands. One that is inherited from its mother and one that is inherited from its father

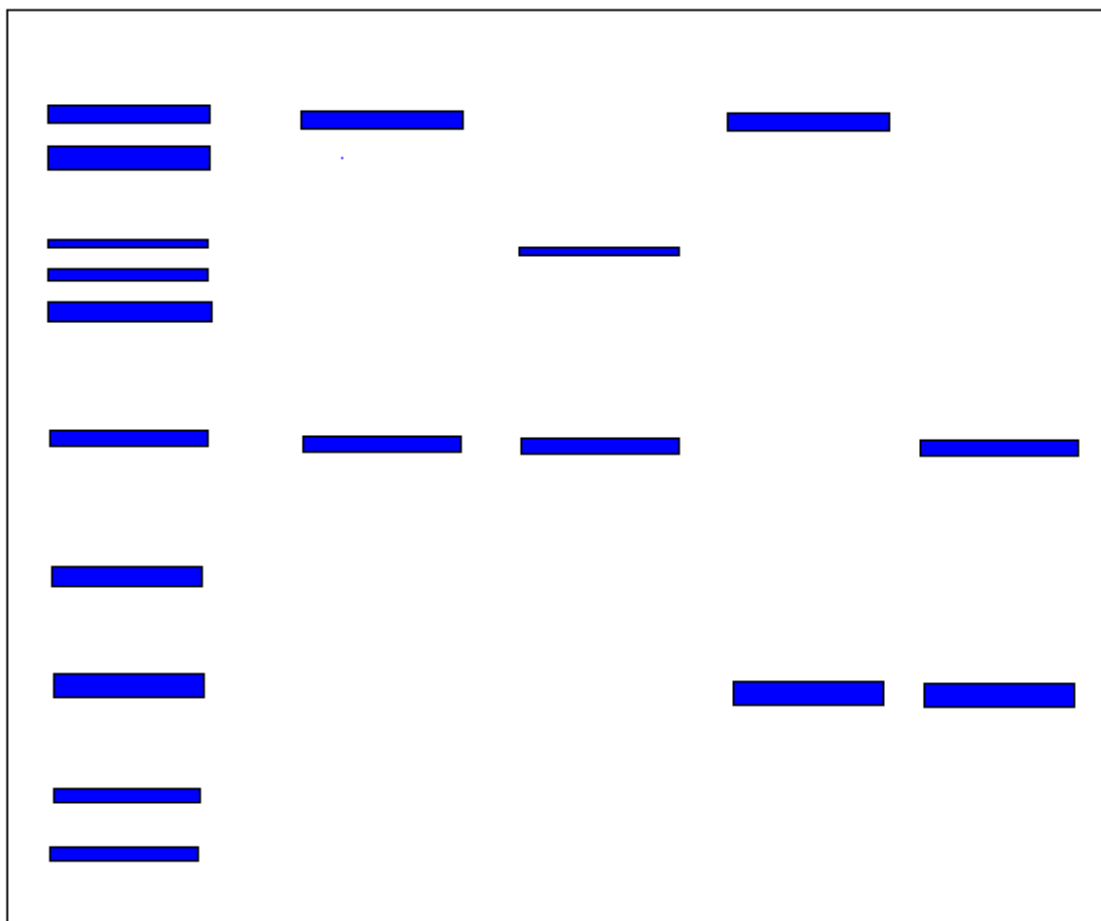
10 possible
DNA Bands
for this Marker

Mother 1

Puppy A

Puppy B

Puppy C



Mother and Puppies - Family Group 2

The DNA Marker used to look at DNA patterns in the dogs has 10 possible bands. Remember that each dog can only have two of these bands. One that is inherited from its mother and one that is inherited from its father

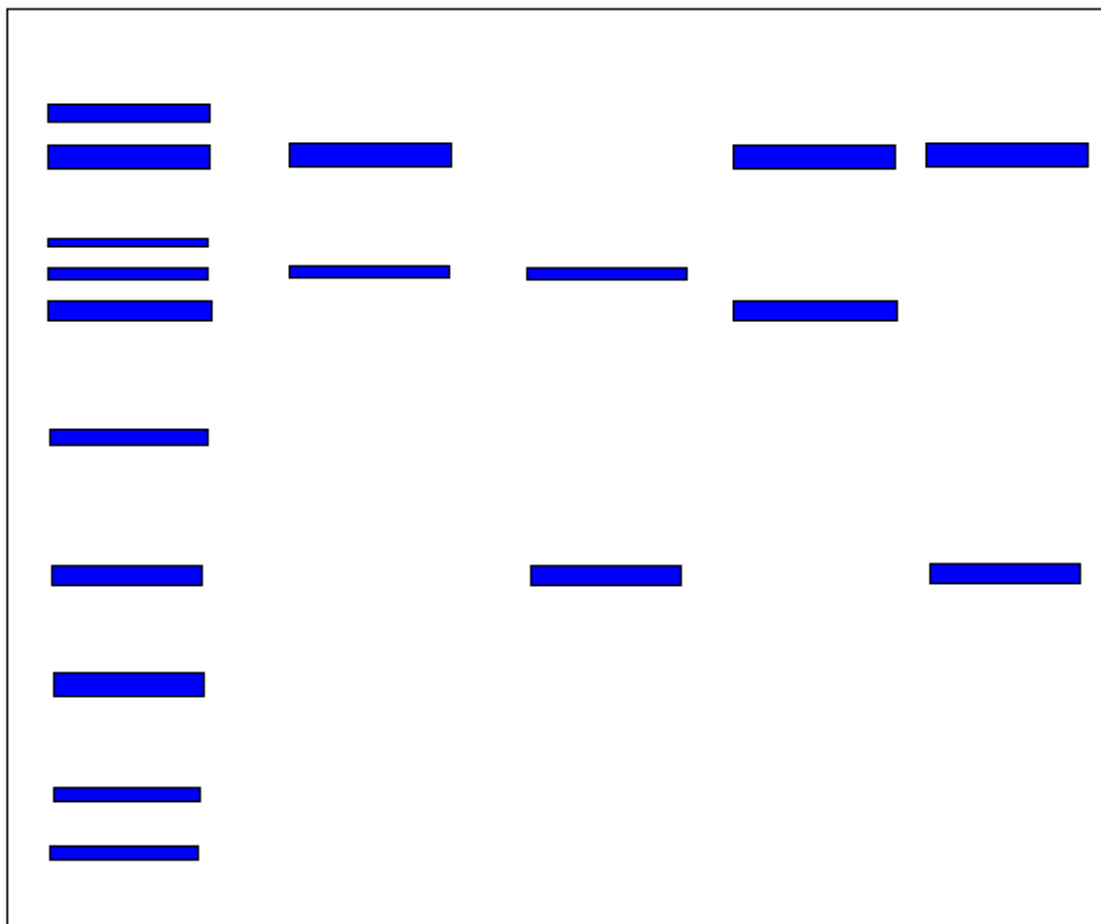
10 possible
DNA Bands
for this Marker

Mother 2

Puppy A

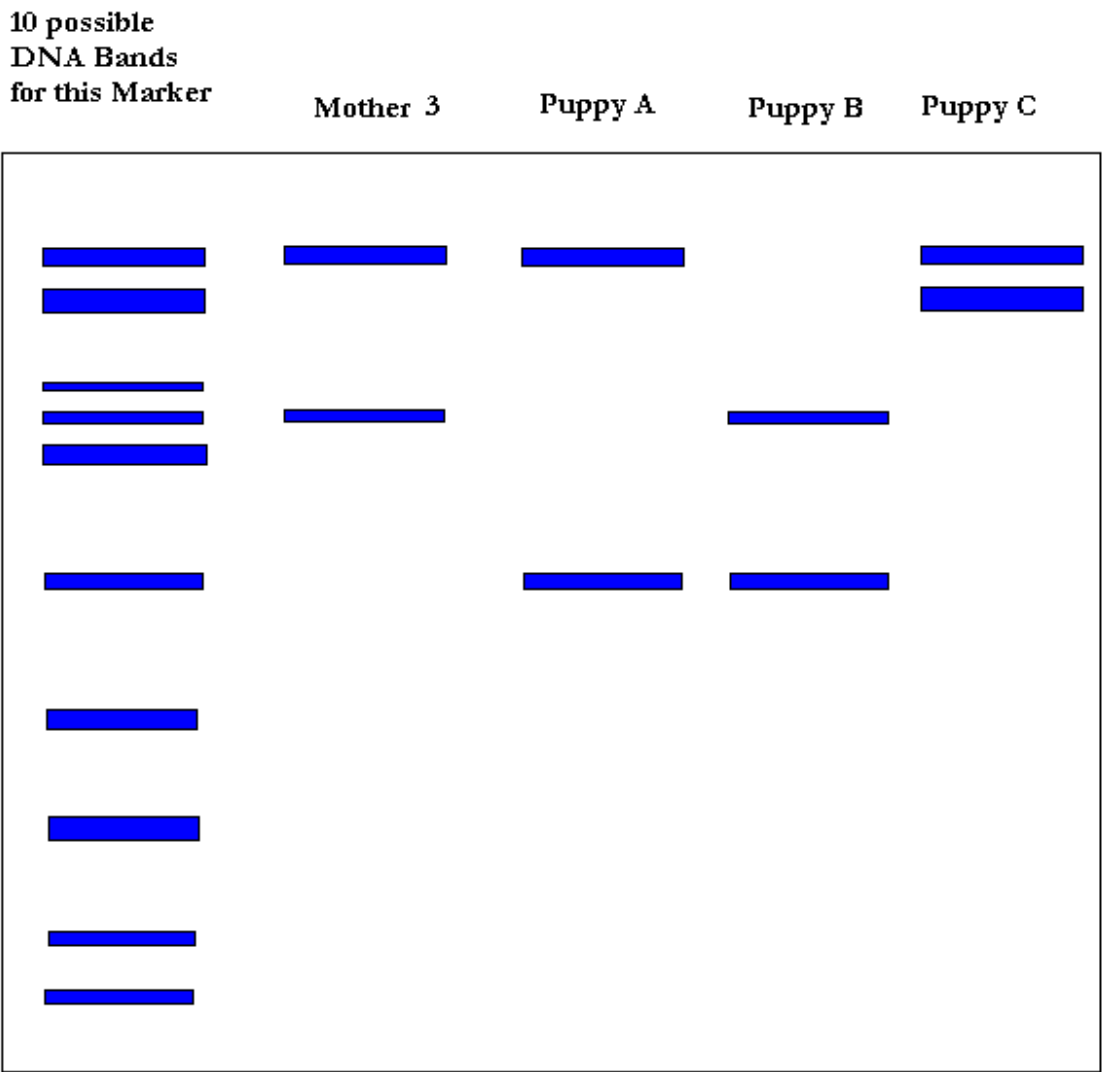
Puppy B

Puppy C



Mother and Puppies - Family Group 3

The DNA Marker used to look at DNA patterns in the dogs has 10 possible bands. Remember that each dog can only have two of these bands. One that is inherited from its mother and one that is inherited from its father



Mother and Puppies - Family Group 4

The DNA Marker used to look at DNA patterns in the dogs has 10 possible bands. Remember that each dog can only have two of these bands. One that is inherited from its mother and one that is inherited from its father

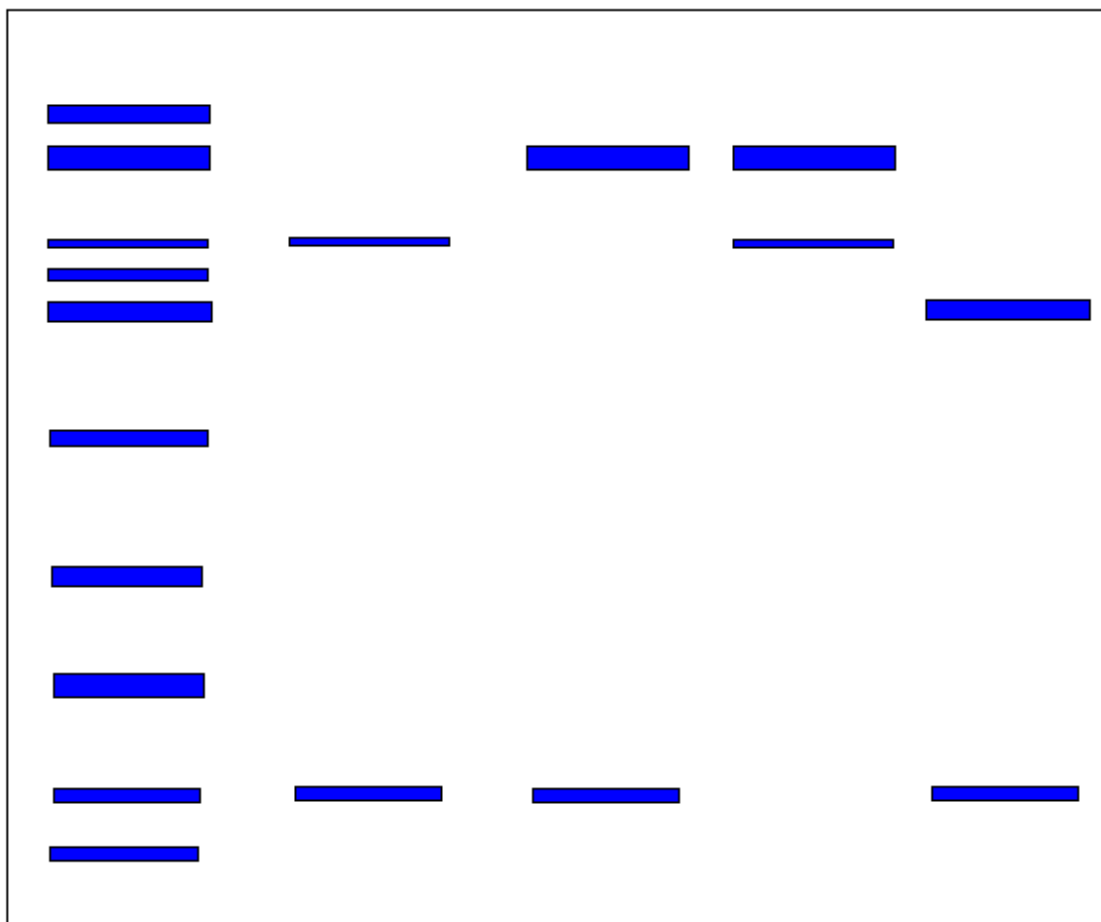
10 possible
DNA Bands
for this Marker

Mother 4

Puppy A

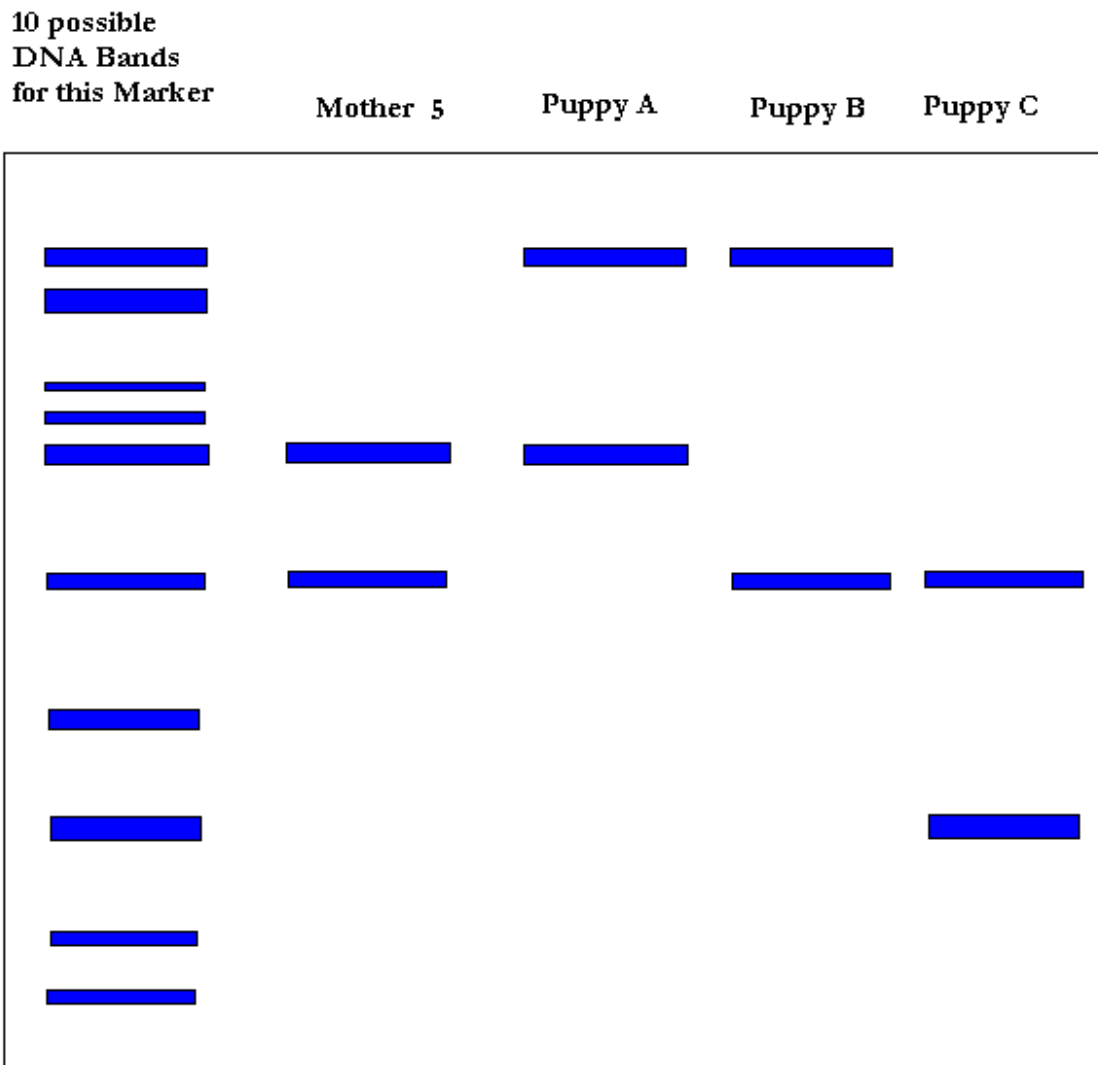
Puppy B

Puppy C



Mother and Puppies - Family Group 5

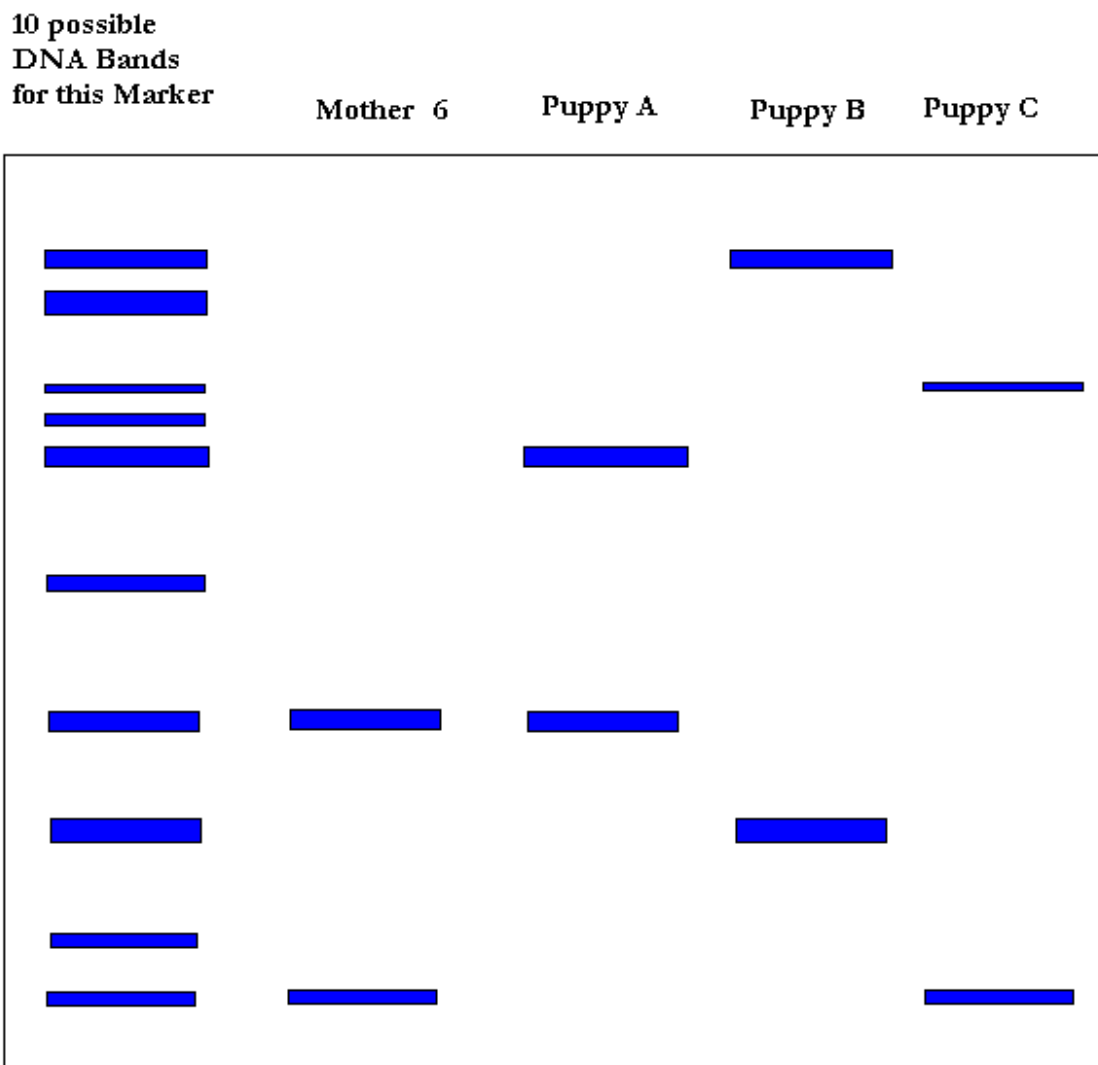
The DNA Marker used to look at DNA patterns in the dogs has 10 possible bands. Remember that each dog can only have two of these bands. One that is inherited from its mother and one that is inherited from its father



Mother and Puppies - Family Group 6

The DNA Marker used to look at DNA patterns in the dogs has 10 possible bands. Remember that each dog can only have two of these bands. One that is inherited from its mother and one that is inherited from its father

Family Group 6 has got a little bit muddled and the police think that one of the puppies, Puppy B, might belong to one of the other family groups. Can you help them decide?



Father Dogs

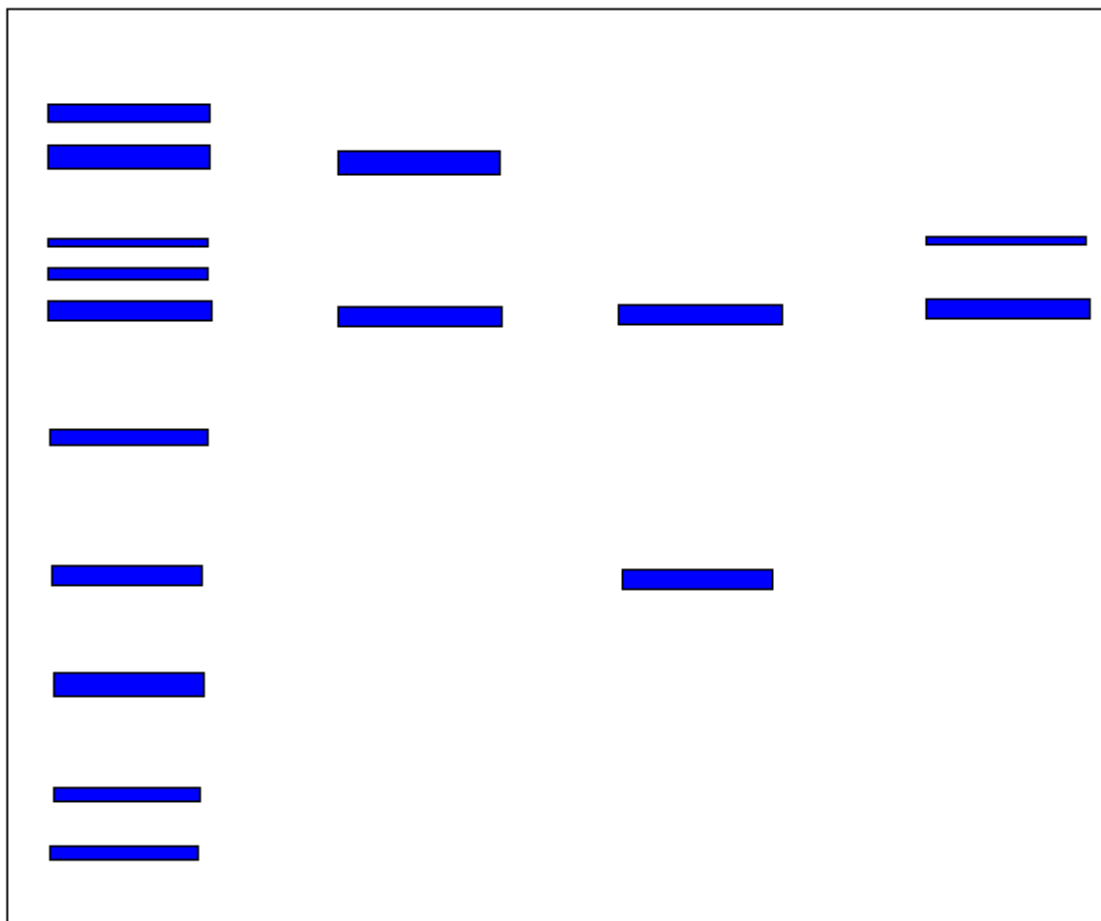
The DNA Marker used to look at DNA patterns in the dogs has 10 possible bands. Remember that each dog can only have two of these bands. One that is inherited from its mother and one that is inherited from its father

10 possible
DNA Bands
for this Marker

Father 1

Father 2

Father 3



Father Dogs

The DNA Marker used to look at DNA patterns in the dogs has 10 possible bands. Remember that each dog can only have two of these bands. One that is inherited from its mother and one that is inherited from its father

